

SPECIAL FH CON TESTA FISSA

SPECIAL FH WITH FIXED HEAD

SPECIAL FH CON CABEZA FIJA

**BASAMENTO REGOLABILE
ADJUSTABLE SUPPORT SYSTEM
SOPORTE REGULABLE**

Art. 185FH	40 ÷ 56 mm
Art. 185.1FH	50 ÷ 70 mm
Art. 185.2FH	70 ÷ 110 mm
Art. 185.3FH	110 ÷ 160 mm
Art. 185.4FH	150 ÷ 210 mm
Art. 185.5FH	200 ÷ 300 mm
Art. 185.6FH	300 ÷ 400 mm
Art. 185.7FH	400 ÷ 500 mm
Art. 185.8FH	500 ÷ 600 mm
Art. 185.9FH	600 ÷ 700 mm
Art. 185.10FH	700 ÷ 800 mm
Art. 185.11FH	800 ÷ 900 mm
Art. 185.12FH	900 ÷ 1.000 mm



TESTA PIANA - FLAT HEAD - CABEZA PLANA



2 mm - h 10 mm

ALETTE FUGA - THICK SPACERS - ALETAS JUNTA



4 mm - h 10 mm

ALETTE FUGA - THICK SPACERS - ALETAS JUNTA



6 mm - h 10 mm

ALETTE FUGA - THICK SPACERS - ALETAS JUNTA



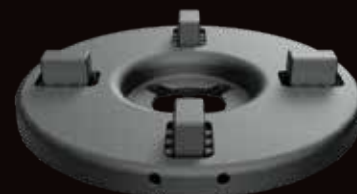
8 mm - h 10 mm

ALETTE FUGA - THICK SPACERS - ALETAS JUNTA



10 mm - h 10 mm

ALETTE FUGA - THICK SPACERS - ALETAS JUNTA

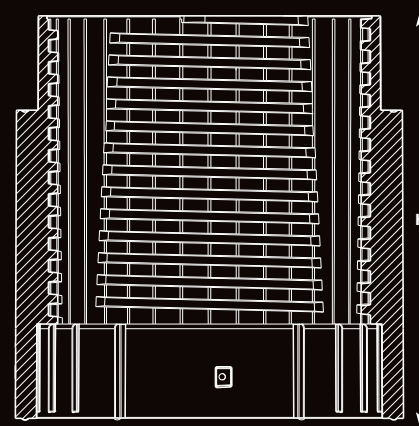
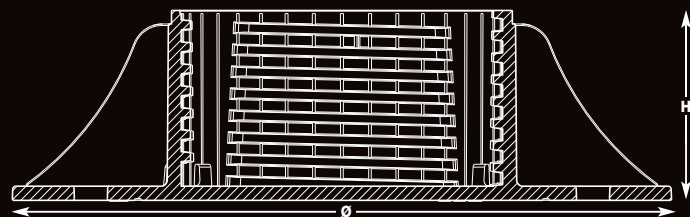
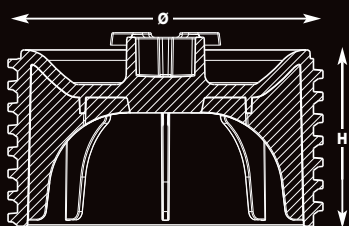
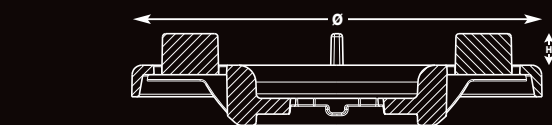


TESTA FISSA / FIXED HEAD / CABEZA FIJA

La TESTA FISSA è disponibile in versione piana, con alette fuga pre-intagliate con spessore 2, 4, 6, 8, 10 mm. e Ø 130 mm.

The FIXED HEAD is available in the flat version or with pre-cut 2, 4, 6, 8, 10 mm spacers Ø 130 mm.

La CABEZA FIJA está disponible en versión plana, con aletas junta precortadas de 2, 4, 6, 8 y 10 mm de espesor y Ø 130 mm.



COMPOSIZIONE BASAMENTI REGOLABILI SPECIAL FH / COMPOSITION OF ADJUSTABLE SUPPORTS SPECIAL FH / COMPOSICIÓN SOPORTES REGULABLES SPECIAL FH

ARTICOLO CODE ART ARTÍCULO	MISURE SIZE MEDIDAS		BASE BASE BASE		VITE FILETTATA THREADED SCREW TORNILLO ROSCADO		PROLUNGA A MANICOTTO THREADED EXTENSION EXTENSION CON MANGUITO		TESTA FISSA FIXED HEAD CABEZA FIJA	
	da mm. from mm. de mm.	a mm. to mm. a mm.	Ø mm.	h. mm.	Ø mm.	h. mm.	pezzi n. pieces n. cant. piezas	h. mm.	Ø mm.	h. mm.
185FH	40	56	210	30	101.8	26			130	10
185.1FH	50	70	210	40	101.8	36			130	10
185.2FH	70	110	210	60	101.8	56			130	10
185.3FH	110	160	220	90	101.8	86			130	10
185.4FH	150	210	220	90	101.8	136			130	10
185.5FH	200	300	220	90	101.8	136	1	130	130	10
185.6FH	300	400	220	90	101.8	136	2	130	130	10
185.7FH	400	500	220	90	101.8	136	3	130	130	10
185.8FH	500	600	220	90	101.8	136	4	130	130	10
185.9FH	600	700	220	90	101.8	136	5	130	130	10
185.10FH	700	800	220	90	101.8	136	6	130	130	10
185.11FH	800	900	220	90	101.8	136	7	130	130	10
185.12FH	900	1.000	220	90	101.8	136	8	130	130	10

Per garantire la portata e la perfetta efficienza del sistema di regolazione, si raccomanda di non oltrepassare la misura massima dichiarata nella descrizione del prodotto.

In order to guarantee the perfect efficiency of the regulation system, it is highly recommended not to exceed the maximum height indicated in the product description.

Para garantizar la capacidad de carga y la perfecta eficiencia del sistema de regulación, se recomienda no superar la medida máxima indicada en la descripción del producto.